



**BIDDULPH
HIGH
SCHOOL**



Potteries Educational Trust Head Office
City of Stoke on Trent Sixth Form College
Leek Road
Stoke on Trent
Staffordshire ST4 2RU
Chief Executive Officer: **Mark Kent**

Conway Road
Knypersley
Stoke-on-Trent
Staffordshire
ST8 7AR

Tel: 01782 523977
Fax: 01782 521820
Email: office@biddulphhigh.co.uk
Website: www.biddulphhigh.co.uk

Headteacher: **Mrs E C Robinson BA (Hons)**

12th July 2021

FOR THE ATTENTION OF THE PERSON WITH PARENTAL RESPONSIBILITY

It is lovely to welcome you all to Biddulph High School and to take this opportunity to revisit some key information ready for September.

Our recorded presentations can be found on our school website in the 'Students' drop-down, titled 'Transition to Year 9' <https://biddulphhigh.co.uk/transition-to-year-9/>

A **Welcome Evening** has been scheduled for parents and carers, in school, on **Thursday 9 September 2021 at 6.00pm**. Please come directly to the school Hall. If you have any questions before this time please do not hesitate to contact us at office@biddulphhigh.co.uk

We have organised a full Induction programme for our new Year 9 in September. **Students will start school on Monday 6th September** and should come into school, through the main school gate where staff will be available to greet them, by 8.40am. We will only be having Year 9 students in school that day to help them to find their feet and settle in. They will have a range of activities, most of which will be with their Form Tutor. We will also be taking photographs and students will be setting up on our biometric system (used to buy food and drink etc.). Please make sure that you have put money onto ParentPay if your child will be buying food and drink.

On Tuesday 7th September, Year 9 students will remain in their form for enrichment activities and preparing themselves for the term ahead. This will include settling into the building, establishing routines and building new friendships with fellow tutees. They will also be able to meet staff, find their way around and meet the Year 13 students who will be supporting them. Our Year 13 students will be happy to answer questions honestly about school life and their own experiences. Lessons will begin on Wednesday 8th September.

On their return, we have been asked to test students for Covid before they begin to mix in and around the school. This will be carried out in tutor groups during the first day. We will assume consent unless you contact the school, by email, to opt out of this. If you do NOT want your child to be tested please email office@biddulphhigh.co.uk and use the title 'Opt Out' followed by a short email providing your child's full name, their Middle school and the statement 'I do not want my child tested for Covid'. We are used to testing at school and the new tests are a nose swab only which should make the process even quicker. It is a good way for us to ensure the wellbeing of all students. We would also ask your child to bring a mask to school. Masks are optional but, if at any point your child tests positive or is taken ill, staff will ask them to put on their mask to protect others.

We have high expectations of our students at Biddulph High School and we will go through these with your child during our Induction Day. I would ask for your full support in upholding our clear Behaviour Policy and expectations. It has been written to ensure that students are able to work hard and meet the challenges that next year will bring.



It is very important to me that learning is not disrupted, and the breaking of school rules is dealt with quickly and effectively to allow our teachers to get on with teaching their lesson. Mobile phones should be turned off and in bags when in school and phones will be confiscated if they are seen. I would also like to reiterate that if a student feels that a decision is unfair, they can raise this at an appropriate time with a member of the pastoral team. We will listen to them and investigate any concerns. Arguing with a member of staff or refusing to follow instructions is unacceptable and will not be tolerated.

At Biddulph High School your child will receive the best possible care with our outstanding pastoral team, who will work with them to help them to settle quickly into the school. Your child will be placed into a 'House' and we will introduce them to our exciting and innovative rewards system. Your child will also have the opportunity to join a wide range of extracurricular clubs and we would encourage all of our Year 9 to at least give one thing a try in their first term. From Tuesday 14th September our school Library will be open every Tuesday, Wednesday, and Thursday until 4.00pm. This is a supervised facility, with full IT access, and a great place to complete homework.

To give your child the best possible start, please ensure that they are in the correct school uniform and bring the correct equipment with them (you can find the equipment list at the end of this letter). If you have any issues with either of these please contact the school. House colour ties are now available to purchase from the school ONLY via ParentPay and, once purchased, your child will be supplied with the relevant tie on the first day of school in September.

Please remember that Biddulph High School has a clear uniform policy which is attached to this letter and available on our school website. I would draw your attention to the **approved style of skirt or trousers** and the **approved style of shoes** and the school **PE kit**. You are of course welcome to purchase items that conform to the specifications from alternative retailers. If you are unsure about any item that you intend to purchase, please contact the school and we will be happy to advise you. There is also a good selection of used uniform available at Biddulph Youth and Community Zone which can be browsed at the Zone every Thursday between 12.00pm and 2.30pm.

We understand that this is a time of mixed emotions for our new Year 9 students. I hope that they have a fabulous last week of term and summer break. Please ask them to take good care as we are all looking forward to meeting them on Monday 6th September.

Yours faithfully,



Mrs E Robinson
Headteacher



BIDDULPH HIGH SCHOOL UNIFORM POLICY

We have a school uniform policy - including standards on hair, jewellery, makeup and nails - which is publicised regularly both to students and to parents/carers and which we expect all students and parents/carers to support.

The reasons for having this policy are:

- School uniform is an effective way of preventing the differentiation between and discrimination against children from advantaged or disadvantaged backgrounds;
- Uniform helps to build up a feeling of community, of belonging to a particular group to whom one owes allegiance and for which one has responsibility. It identifies a student as belonging to Biddulph High School, and as such they can bring praise on the whole school;
- School uniform helps young people to accept that there are appropriate standards of appearance for certain circumstances. We want our young people to look smart as an outward indication of a positive attitude generally;
- School uniform helps students to leave outside influences behind, focus on school work and concentrate on learning.

School responsibility: To ensure that all students are aware of the school uniform requirements and to implement these by the monitoring of student appearance and follow-up of infringements. We will confiscate any items (e.g. jewellery/ non uniform) that contravene the uniform policy and students will be able to collect them from the school reception after their detention.

Student responsibility: To make sure that your appearance is in line with school rules regarding the wearing of uniform and the guidelines on hair, jewellery, make-up and nails. Inform a member of the Pastoral team immediately if you have an issue with your uniform e.g. item rips during the school day.

Parent / carer responsibility: To ensure that your child leaves for school each day correctly dressed, without: extremes of hairstyle or colour; wearing jewellery beyond that stated in the school policy; wearing excessive make-up or fake tan; inappropriate nails. We may ask you to bring an item of uniform to School if we are unable to lend your child a spare item for that day. Inform the school immediately if there is an issue with an item of your child's uniform or you are finding it difficult to replace an item.

As students get older, they invariably try to add their own 'style' to their uniforms and it can be, at times, difficult to keep variations of uniform in check – particularly as fashion trends change. It is for this reason that we have tried to be as clear as possible with our guidelines.

We enforce our uniform guidelines (including hair, jewellery, makeup and nails) firmly but fairly - if students are not wearing the correct uniform, they will not be able to participate in lessons with their peers and will be educated in Return to Learn (RTL) until the incorrect uniform is resolved.

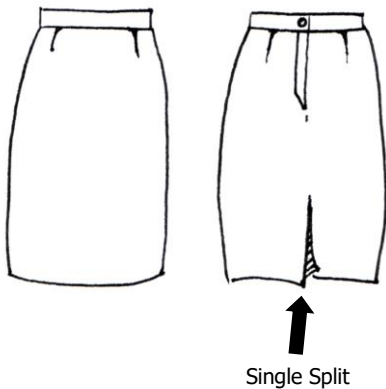
It is worth noting that if you buy a skirt, a pair of trousers or a pair of shoes and you are concerned as to its suitability, we are more than willing to check it for you in school. All your son/daughter needs to do is bring it in, with the tags still attached and we will look at it for you.



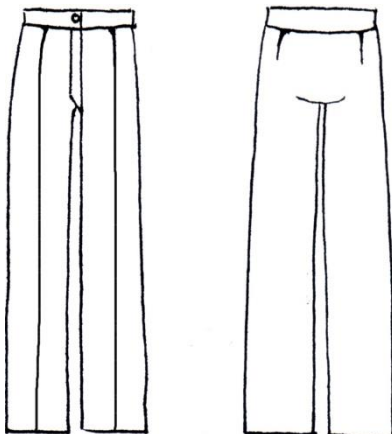
SCHOOL UNIFORM

- Blue blazer (approved school style)
- Plain white shirt
- School tie * **Please do not purchase a tie from suppliers directly, as for Year 9 only we are changing to ties with house colours and this will be available to purchase from the school on ParentPay***
- Charcoal trousers of agreed style or plain charcoal skirt of agreed style (see below)
- Navy v-neck fine knit jumper of agreed style (see below) (*optional*)
- Black tights or black or white socks (ankle or knee length, but not over the knee socks)
- Plain black shoes, not boots. Shoes must be sensible. Training style shoes/trainers or shoes/boots with coloured markings on them are not appropriate. Shoes need to be substantial – ballet style shoes, slipper shoes, shoes with thin soles, high heels, open toe, or mules are not appropriate.

SKIRTS AND TROUSERS

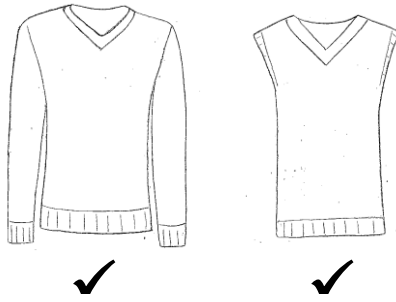


- The skirt should be of a straight, tailored style and charcoal grey.
- The skirt should have a waistband and the skirt should sit on the waist; it should not be shorter than approximately 2½cm (1 inch) above the knee.
- The school skirt should not have any side splits.
- It should not fit tightly – if the skirt is too tight, it is too small.
- If you do not purchase the skirt from the recognised supplier, you must ensure that the skirt meets all of the mentioned criteria.



- The trouser should have a waistband, no belt; it should be full length and charcoal grey.
- The waistband of the trouser should sit on the waist and not on the hips; the line of the trouser should be parallel; flared trousers or tight trousers are not appropriate. If the trousers are tight on the thighs, they are too small.
- The hem of all trousers should be at least 6cm (2½ inches) from the floor.
- The school trouser must have a crisp front crease down the legs.
- If you do not purchase the trousers from the recognised supplier, you must ensure that the trouser meets all of the mentioned criteria.

JUMPERS



Jumpers are not an alternative to the blazer – a blazer must be worn at all times. If a student becomes too warm with both the blazer and the jumper, the jumper is the item that needs to be removed.

- Plain **navy**, long-sleeved jumper or tank top, fine knit with a V-neck.
- The hem should be just lower than the waistband of the skirt/trousers but not below the hem of the blazer.

Compulsory

- BHS Navy polo shirt
- BHS Navy shorts
- BHS Navy socks
- BHS Navy Training Top
- Training shoes
- Gum shield (Rugby Boys only)
- Football Boots* - Needed for Rugby lessons (Boys only) and competitive School Rugby and Football games if selected (Boys and Girls) *Football Boots are not allowed on the Astro Turf
- Shin pads for competitive football

Optional

- BHS Navy Training Pants (*if students opt to wear these, they **must** be our approved school style, they will not be able to wear regular styles)
- BHS Leggings (*if students opt to wear these, they **must** be of our approved school style, they will not be able to wear regular leggings)

School uniform and PE Kit is available from:

Clive Mark Schoolwear Limited, 25 High Street, Town Centre, Newcastle under Lyme, Staffordshire, ST5 1QZ
Tel: 01782 621721 Web: <https://www.clivemark.co.uk>

Smart Uniform, 1 Harvey House, Hassell Street, Newcastle under Lyme, Staffordshire, ST5 1AR
Tel: 01782 713650 Email: sales@smartuniform.co.uk Web: <https://www.smartschooluniform.co.uk/>



APPEARANCE

HAIR

We will not accept extreme hairstyles which tend to be in fashion as trends change. It is difficult to be prescriptive about this but it is worth noting that the following styles have never been acceptable:

- Tram lines / patterns in the hair. An all over grade 1 haircut, including any hairstyle that has a grade 1 cut shaved into it;
- Coloured streaks or shadings such as pinks, greens, purples, blues etc.
- Bleach used to create an obvious pattern in the hair, such as bleach used to streak down the centre of the hair, which contrasts with the rest of the hair colour;
- Decorative inserts such as feathers, tinsel or braids etc.

PIERCINGS

No facial piercings of any sort (nose, eyebrow, lip, chin, tongue etc.) It is not acceptable to wear clear studs or a plaster over the piercing.

JEWELLERY

A reminder that for reasons of Health and Safety the only jewellery allowed to be worn in school is a watch and one pair of stud earrings (one in each lobe).

NAILS

Only clear and pale pink nail varnish may be worn in school. No gel, acrylic or excessively long nails.

MAKEUP

Subtle makeup can be applied. No false eyelashes, heavy eye makeup, blusher or lipstick and no fake tan.

OTHER INFORMATION

LOCKERS

You will be able to rent a locker for the school year by visiting the school website. **Please do not try and rent one before the end of July 2021** as we are moving to an 'in-house' system.

BICYCLE LOCKERS

Students must rent a bicycle locker if they wish to bring a bicycle to school. We have a limited number of lockers available at a cost of £10 (Cash payable at Reception). Please see Reception if you wish to rent one.

EQUIPMENT LIST

- **A SCHOOL BAG**
- **A PENCIL CASE CONTAINING:**
 - 2 black or blue pens
 - a pencil
 - a purple pen
 - a ruler
 - a rubber
 - a scientific calculator
- **A READING BOOK**

