



BIDDULPH SIXTH FORM

COURSE GUIDE 2026



Potteries
Educational
Trust





BH6 CONTENTS

- Welcome Message
- About BH6
- Pathways
- Qualifications
- Entry Requirements
- How to apply
- Testimonials



WELCOME MESSAGE



As a member of the Potteries Educational Trust, we believe that we have enhanced opportunities to provide our students with a rich and stimulating learning experience. These include a wide range of enrichment opportunities, including access to Higher Education, trips and visits, and additional subject support. All our staff will do their utmost to ensure you achieve your potential during your time with us.

For most people, being aged 16 to 19 is an exciting but challenging time in their lives. Taking on new responsibilities, managing your time, planning your courses and finding a route through all the possibilities that await you, are all things you will need help with. Our job is to ensure we put that personalised support in place so that you leave BH6 as confident and articulate young people, ready for the next step, whether that is work or higher education.

Sixth Form life should not just be about studying but must also provide opportunities for you to take part in, these include sport, music, work experience, Duke of Edinburgh, mentoring and volunteering, as well as educational visits to places in this country and abroad. This will help you develop as educated young people and we strongly urge you to take part in the many and varied enrichment activities that will be on offer.

We believe that the young people in the local area deserve the very best. BH6 is exactly that. Former students have gone on to study at Oxford and Cambridge, to study Medicine and Veterinary Science, or have accessed high quality apprenticeships with the Police, in engineering and in business. Whatever your ideas for your future, we have the staff here to support you in taking those next steps.

If you want to reach your potential and fulfil your ambitions, BH6 is the place for you. If you have any further questions, please do not hesitate to speak to us; we will do our best to help you.

Mr D Robinson
Executive Headteacher

Mr D Scott
Headteacher

Mr C Swift
Head of Sixth Form



ABOUT BH6

At BH6, our prime focus is simple: high-quality teaching, learning, and support for every student. We're proud of the excellent results we've achieved over many years, and we know this success comes from using the very best approaches — from clear target setting and regular assessment to strong pastoral care, enrichment opportunities, and the positive relationships built between staff and students.

We offer courses that are challenging, exciting, and relevant — designed to prepare you for university, apprenticeships, and future careers. With a diverse range of subjects, BH6 provides a personalised and inclusive approach that means every student can find the right pathway for them.

When choosing your courses, we encourage you to think carefully about your strengths, interests, and ambitions. By matching the right subjects to your goals, you'll be setting yourself up for success at Sixth Form and beyond.



Achieve Excellence



QUALIFICATIONS

We are proud to offer challenging, exciting and relevant courses to meet the needs of our students and the demands of university and employment. BH6 offers a diverse range of courses to ensure a personalised and inclusive approach for all students. You should consider carefully the range of courses on offer and ensure that you choose courses to suit your needs.

A Levels

Want to you to challenge yourself and open doors to top universities and careers? A Levels are the perfect route if you've got at least 5 strong GCSE passes and you're ready to specialise. Each subject has its own entry requirements, and you'll be assessed through a mix of exams and coursework.

BTEC / AAQ

Prefer a more practical, hands-on approach? BTEC / AAQ courses could be for you. With at least 5 higher GCSE passes (including English Language and Maths), you'll combine coursework, exams, and real-world projects to build the skills employers and universities are looking for.

Enrichment

Sixth Form isn't just about exams. In Year 12, you'll get to pick an enrichment activity alongside your subjects — with a number of opportunities available. It's your chance to try something new, build your confidence, and make your CV or UCAS application stand out.

English and Maths Resit

Haven't quite secured that Grade 4 in English or Maths yet? Don't worry — we'll help you get there. You'll follow a tailored resit programme designed to build your confidence and get you over the line. Strong English and Maths skills are essential, and achieving them will unlock more jobs, apprenticeships, and university courses after Sixth Form.



SELECTING YOUR SUBJECTS

WHAT SHOULD YOU TAKE?



Are you interested in studying that subject?

You will be studying that subject for at least 5 hours a week plus homework for the next one or two years, so it's important you choose carefully.

Do you know what that subject and qualification involves?

This prospectus is only a starting point. Ask subject staff and sixth form students what that subject involves.

Have you got the ability to be successful within that subject/qualification?

Check out the course entry requirements and the assessment expectations.

Is your combination of subjects/qualifications sensible?

Research job criteria on the internet via the National Careers Service: Check out the course entry requirements and the assessment expectations.

Look at university requirements via UCAS: www.ucas.com
Complete further research via Unifrog: <https://www.unifrog.org/sign-in>



If you don't know what you want to do, then choose a range of subjects to develop your skills and knowledge and widen the options for the future.

For further support choosing your courses, speak to:

- Subject staff,
- Mr Swift (Head of Sixth Form)
- Mrs Campbell (Careers Lead).



OUR COURSES



Explore the courses available and picture yourself studying the subjects that excite you most – the ones that will support your ambitions, broaden your horizons, and help you take the next step towards your future.

WHICH COURSES DO WE OFFER?

You'll select at least three courses, with the option of a fourth. Each has a tariff value shown in the Options list. You can mix A Levels, BTECs and AAQs (just not in the same subject area). Entry requirements will guide you to the best pathway from your Level 2 results, with some flexibility for exceptional candidates.

A-Levels

[Tariff Value = 1 A-Level equivalent]

- Art & Textiles
- Biology
- Business Studies
- Chemistry
- Computer Science
- English Language
- English Literature
- Geography
- German
- Graphics
- History
- Law (New for 2026!)
- Mathematics
- Music
- PE
- Photography
- Physics
- Psychology
- Sociology

AAQs

[Tariff Value - 1 A-Level Equivalent]

- AAQ Applied Human Biology
- AAQ Health and Social Care
- AAQ ICT

BTECs

[Tariff Value - 2 A-Level Equivalent]

- BTEC Business Studies
- BTEC Sport

T Level

[Tariff Value - 3 A-Level Equivalent]

- Early Years (New for 2026!)

You'll also select an additional experience to sit alongside your subjects in Year 12. The **enrichment** option diversifies your skills and increases your opportunities Post 18:

- AS Level Further Maths
- Duke of Edinburgh
- Extended Project Qualification (EPQ)
- GCSE English Resit
- GCSE Maths Resit
- Peer Mentors
- Sport
- Work Experience
- Year Book
- School Production



HVBI



A-LEVEL ART & TEXTILES

Course Summary

A Level Art & Textiles is an exciting and dynamic course for students who love to create, experiment, and express themselves through materials. It combines the freedom of fine art with the structure and skill of textiles, encouraging you to push creative boundaries and develop a personal style.

If you enjoy designing, making, and exploring how fabrics, textures, and mixed media can communicate ideas, this course is perfect for you. Students have the option to focus on either specialism; Art, Craft and Design or Textiles.

What you will learn

- Explore drawing, photography, sketchbook work, and digital techniques to support and enhance your designs.
- Develop a wide range of practical skills, including hand and machine stitching, dyeing, printing, embroidery, appliqué, and 3D construction.
- Research artists, designers, and textile practitioners, using their work as inspiration for your own.
- Create a personal portfolio of experimental and final pieces, showing your individuality and creative voice.
- Refine your ability to analyse, evaluate, and present your work to a professional standard.

During the first year of study, students will be introduced to a variety of experiences that explore a range of media, techniques and processes through a variety of themes and project ideas.

Assessment

- Component 1 (60% of A Level) is a personal investigation based on a topic chosen by the student. This is a practical investigation supported by written material. The investigation should be a coherent, in-depth study that demonstrates the student's ability to construct and develop a sustained project, from a starting point to a final outcome.
- Component 2 (40% of A Level) is an externally set assignment where students choose from topics set by the examination board. Students will have a choice of starting points set by the examination board and a preparatory period, starting February 1st in Year 2, resulting in fifteen hours of supervised and examined time.

All components are internally marked and externally moderated. The work is externally moderated by the AQA board and forms part of the compulsory annual exhibition. It is the student's responsibility to organise and display their work for moderation.

Career Opportunities

A Level Art & Textiles students can continue onto university to complete a degree or a foundation degree. This will lead onto specific areas of specialism depending on the course selection, i.e. designer, crafts person, photographer, sculptor, illustrator, graphic designer, surface pattern, product design, fashion design.

Further Information:

See Mrs Hall or Miss West



A-LEVEL BIOLOGY

Course Summary

Module 1- Development of practical skills in Biology

Skills of planning, implementing, analysis and evaluating

Module 2- Foundations in Biology

Cell structure, biological molecules, nucleotides and nucleic acids, enzymes, biological membranes, cell division, cell diversity and cellular organisation

Module 3 –Exchange and transport

Exchange surfaces, transport in animals and transport in plants

Module 4 – Biodiversity, evolution and disease

Communicable diseases, disease prevention and the immune system, biodiversity, classification and evolution

Module 5 – Communications, homeostasis and energy

Communication and homeostasis, excretion as an example of homeostatic control, neuronal communication, hormonal communication, plant and animal responses, photosynthesis, respiration

Module 6 – Genetics, evolution, and ecosystems

Cellular control, patterns of inheritance, manipulating genomes, cloning and biotechnology, ecosystems, populations and sustainability

Assessment

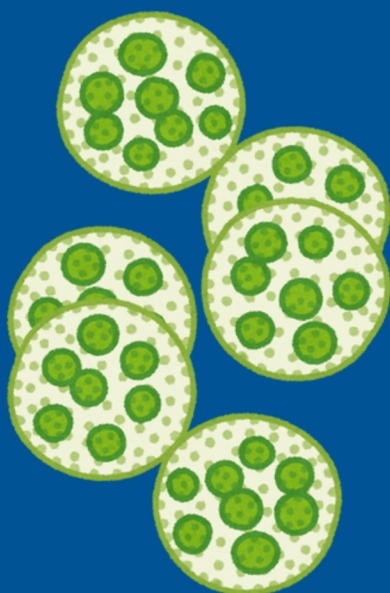
- The assessment is split into a theory and practical component:
- Students sit three examinations in the June of Year 13.
- Students complete a range of practical tasks for the Practical Endorsement - a Pass/Fail reported alongside the A Level grade. The Practical Endorsement involves 12 practical tasks completed throughout the course.

Career Opportunities

A Level Biology is considered as a facilitating A Level and is recognised as such on any university application. A Level Biology students can continue onto University into degree courses related to: Medicine, Veterinary Science, Dentistry, Physiotherapy, Teaching, Marine Biology, Environmental Science or Ecology.

Further Information:

See Mr Williams or Mrs Woolhouse





A-LEVEL BUSINESS STUDIES

Course Summary

Get ready to dive into the fast-paced world of business with our dynamic A Level Business course! You'll explore how businesses, big or small, across the UK and internationally, make critical decisions that shape their success. This course offers a unique blend of theory and real-world application, covering:

- Decision-Making: How businesses adapt to different environments and challenges.
- Business Functions: How areas like marketing, finance, and operations drive competitiveness.
- Ethics & Technology: The role of ethical, environmental issues and tech innovations in shaping business strategies.
- Data Use: How businesses use both quantitative and qualitative data to inform decisions.

Assessment

Your success in this course will be determined by three written exams, each lasting 2 hours and contributing 90 marks to the final grade. Each paper will have 2 case studies and each case study will be followed by 5 compulsory questions worth 45 marks in total.

Career Opportunities

Studying A Level Business opens doors to a wealth of exciting careers and further studies! Whether you want to continue into higher education or kick-start your career, the possibilities are endless:

- University Degrees: Marketing, Accountancy, Law, Human Resources, Economics, Management, and more!
- Degree Apprenticeships: Combine work and study with industry-recognized programmes in business management, finance, and IT.
- Entrepreneurship: If you've ever dreamed of starting your own business, this course will give you the skills and knowledge to make it happen!

Whatever path you choose, A Level Business equips you with the essential skills to thrive in a competitive global job market.

Further Information:

See Mrs St.Clair or Mr Scarratt





A-LEVEL CHEMISTRY

Course Summary

The A Level course is taught over two years covering 5 modules. We begin looking at the Foundations of Chemistry then move on to the Periodic Table, Energy and Organic Chemistry. In the second year we cover the last two modules studying further complex organic reactions and Physical Chemistry.

Module 1 underpins the whole of the specification covering the practical skills students develop throughout the course. The practical skills are assessed on the examination papers. Students will gain a practical certificate that is awarded for the completion of specific chemical reactions.

Assessment

- Papers 1 and 2 are made up of multiple choice and more structured questions.
- Paper 1 assesses the content from Modules 1,3 and 5.
- Paper 2 assesses the content from Modules 1, 2, 4 and 6.
- Paper 3 assesses the content from Modules 1 to 6 and examines extended response questions covering theory and practical skills.

Career Opportunities

A Level Chemistry is considered as a facilitating A Level and is recognised as such on any university application. A Level Chemistry students can continue onto university degree courses, studying a variety of biological, chemical, medical, veterinary and physical sciences.

For More Information

Further Information:

See Mr Williams, Mr Woolhouse or Miss Goldstraw





A-LEVEL COMPUTER SCIENCE

Course Summary

Computer Science is where creativity meets technology.

It's about solving problems, building new ideas, and understanding the digital world that shapes our lives.

On this course, you'll learn how computers really work, how information is stored and shared, and how to use code to bring your own solutions to life.

By studying Computer Science, you'll gain:

- The skills to break down tough problems and design smart, practical solutions.
- Hands-on experience in coding and creating your own programs.
- A new way of thinking—logical, analytical, and creative all at once.
- The ability to see the bigger picture and connect different areas of computer science.
- Strong mathematical and problem-solving skills that will help you in any career.
- An awareness of how technology shapes society—its opportunities, challenges, and risks.
- The ability to articulate the individual (moral), social (ethical), legal and cultural opportunities and risks of digital technology.

If you're curious about how things work, enjoy solving puzzles, or dream of building the next big app, game, or innovation, Computer Science will give you the tools and confidence to make it happen.

Assessment

- Component 01 Computer systems: 140 marks – 2 hours and 30 minutes written paper.
- Component 02 Algorithms and programming: 140 marks – 2 hours and 30 minutes written paper.
- Component 03 or 04 Programming project: 70 marks - Non examination assessment.
- Career Opportunities

Career Opportunities

This course has been developed in partnership with industry leaders such as the British Computer Society (BCS) and top universities, ensuring it's up to date with the skills that employers and higher education are looking for. It gives you a clear progression into further study and a huge variety of careers.

Computer Science isn't just about coding—it's about learning how to solve problems and think in powerful new ways. These skills are in demand everywhere.

By studying this course, you'll gain an edge for future careers in:

- Engineering – from robotics to aerospace.
- Cybersecurity – protecting people and businesses from online threats.
- Artificial Intelligence & Data Science – shaping the technology of the future.
- Game Development & Creative Media – designing immersive experiences.
- Finance & Business – using data and logic to drive decisions.
- Healthcare Technology – improving lives through innovation.

Whether you want to design the next big app, keep the digital world safe, build smart machines, or tackle global challenges with technology, Computer Science will open doors to exciting opportunities across industries.

Further Information:

See Ms Deavall or Mr Moody





A-LEVEL ENGLISH LANGUAGE

Course Summary

The AQA English Language A Level course content reflects contemporary language study. With exciting text and data-based sources of language, the course introduces the study of English in its various forms and contexts; the concepts and methods are appropriate for the analysis of language in all its forms. Offering clear skills progression from GCSE, the course allows students to build on the skills already gained and prepare for their next steps.

The variety of assessment styles used, such as data analysis, discursive essays, directed writing, original writing and research-based investigative writing, allows students to develop a wide range of skills. These include critical reading, data analysis, evaluation, the ability to develop and sustain arguments and a number of different writing skills which are invaluable for both further study and future employment.

Assessment

- The A Level course culminates in three assessed components:
- Paper 1: Language, the individual and society. This paper assesses textual variations and representations and children's language development (0–11 years). This is assessed through a written exam: 2 hours 30 minutes and accounts for 40% of the A Level.
- Paper 2: Language diversity and change. This paper assesses language diversity and change and language discourses. It also assesses writing skills. This is assessed through a written exam: 2 hours 30 minutes and accounts for 40% of A Level.
- Non-exam assessment: Language in action. This involves a detailed language investigation and original writing. This has a word count of 3,500 and accounts for 20% of A Level. It is assessed by teachers and moderated by the AQA examination board.

Career Opportunities

English Language is considered a prestigious subject at A Level and is recognised as such on any university application. An A Level in English Language can lead to careers in, amongst others, teaching, speech therapy, public relations, journalism and publishing. The skills develop on the course enhance any higher education course.

Further Information:

See Mrs Naylor or Mr Heath.





A-LEVEL ENGLISH LITERATURE

Course Summary

AQA English Literature (A) allows students to approach the study of literature through the theme of Love Through the Ages. The course encourages the independent study of a range of texts within a shared context, giving logic and meaning to the way that texts are grouped for study. This unifying approach facilitates the inclusion of a range of wider reading, thus extending students' experience and appreciation of literature.

Offering clear progression from GCSE, the course enables students to build on the skills and knowledge already gained and prepare for their next steps. There are a variety of assessment styles used, such as passage-based questions, unseen material, single- text questions, multiple-text questions, and open- and closed-book approaches. These allow students to develop a wide range of skills, such as the ability to read critically, analyse, evaluate and undertake independent research which are valuable for both further study and future employment.

Assessment

- The A Level course culminates in three assessed components:
- Paper 1: Love Through the Ages. Students study three texts: one poetry and one prose text, one which must be written before 1900, and one Shakespeare play. The exam will include two unseen poems. This is assessed through a 3 hour written exam which accounts for 40% of A Level.
- Paper 2: Texts in shared contexts. Students and teachers have a choice of studying WW1 and its aftermath or Modern times: literature from 1945 to the present day. Students study three texts: one prose, one poetry, and one drama, of which one must be written post-2000. This is assessed through a 2 hour 30-minute written exam which accounts for 40% of A Level.
- Non-exam assessment: Independent critical study of texts across time. This a comparative critical study of two texts, at least one of which must have been written pre-1900. This is assessed through one extended essay (2,500 words) and a bibliography. This accounts for 20% of A Level. It is assessed by teachers and moderated by AQA.

Career Opportunities

English Literature is considered as a facilitating A Level and is recognised as such on any university application. An A Level in English Literature can lead to careers in, amongst others, teaching, public relations, journalism and publishing. The skills developed on the course enhance any higher education course.

Further Information:

See Mrs Fleet or Mrs Murphy.





A-LEVEL GEOGRAPHY

Course Summary

There are 4 areas of study, comprising a total of 8 topics.

Area of Study 1: Dynamic Landscapes

- Tectonic Processes and Hazards.
- Landscape Systems, Processes and Change (Coastal Landscapes).

Area of Study 2: Dynamic Places

- Globalisation.
- Shaping Places (Regenerating Places).

Area of Study 3: Physical Systems and Sustainability

- The Water Cycle and Water Insecurity.
- The Carbon Cycle and Energy Security.

Area of Study 4: Human Systems and Geopolitics

- Superpowers.
- Global Development and Connections (Health, Human Rights & Development).

Assessment

Paper 1 - 30% of qualification

Assessing topics 1, 2, 5, 6 and 7 and geographical skills
(2 hours, 90 marks).

Paper 2 - 30% of qualification

Assessing topics 3, 4, 8 and 9 and geographical skills
(2 hours, 90 marks).

Paper 3 - 20% of qualification

Synoptic investigation of a geographical issue
(1 hour 45 minutes, 60 marks).

Coursework - 20% of the qualification

An Independent Investigation, 70 marks

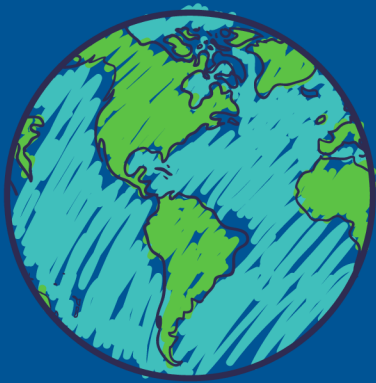
Internally assessed and externally moderated written report of
3000-4000 words based on fieldwork data collected by the student.

Career Opportunities

Geography is considered as a facilitating A Level and is recognised as such on any university application. Many A Level Geography students continue onto university in geographically related degree courses. Others enter employment in jobs associated with environmental issues, urban and rural planning, demographic issues, geology related industries and energy services, amongst many others.

Further Information:

See Mrs Horton-Smart or Mrs Zacune



A-LEVEL GRAPHICS

Course Summary

A Level Graphics is perfect for creative thinkers who are excited by visual communication and design. It combines artistic expression with digital and practical skills, giving you the chance to explore how imagery, typography, layout, and illustration can inform, persuade, and inspire.

Whether you're interested in branding, advertising, digital media, illustration, or packaging, this course will help you develop the skills and portfolio needed to succeed in the creative industries.

What you will learn

- Drawing, mark-making, and mixed media techniques.
- Adobe Creative Suite (Photoshop, Illustrator, InDesign) for professional digital design.
- Photography, image manipulation, and collage.
- Typography, layout design, and branding.
- Printmaking and packaging design

Assessment

- Component 1 (60% of A Level) is a personal investigation based on a topic chosen by the student. This is a practical investigation supported by written material. The investigation should be a coherent, in-depth study that demonstrates the student's ability to construct and develop a sustained project, from a starting point to a final outcome.
- Component 2 (40% of A Level) is an externally set assignment where students choose from topics set by the examination board. Students will have a choice of starting points set by the examination board and a preparatory period, starting February 1st in Year 2, resulting in fifteen hours of supervised and examined time.
- All components are internally marked and externally moderated. The work is externally moderated by the AQA board and forms part of the compulsory annual exhibition. It is the student's responsibility to organise and display their work for moderation.

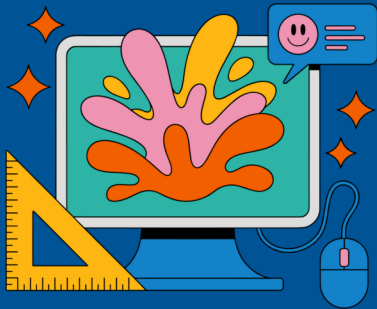
Career Opportunities

A Level Graphic Design can lead to a range of Design, Art, Photography and Design courses at Higher Education institutions. The process of investigation and research is used in all Design, Arts and Media courses. Examples of past students degree choices have been Graphic Design, Fine Art, Surface Pattern Design, Digital Media and Web Design and careers could include Graphic Designer, freelance designers and games designers.

For More Information

Further Information:

See Mr Halfpenny



A-LEVEL GERMAN

Course Summary

Studying German at A Level opens the door to a world of opportunities. Building on the skills gained at GCSE, you will develop the confidence to communicate fluently in one of the most widely spoken languages in Europe, while also gaining a real insight into the cultures, histories and societies of German-speaking countries.

The course explores a wide range of fascinating topics, including Social Issues and Trends, Artistic Culture, Multiculturalism, and Aspects of Political Life. Alongside this, you will study the internationally acclaimed novel *Der Vorleser* and the Oscar-winning film *Goodbye, Lenin!*, both of which bring history and culture vividly to life.

German A Level is more than just a language course – it equips you with highly sought-after skills for university, employment, and beyond. From enhancing your career prospects to making travel more rewarding, studying German broadens horizons and sharpens your understanding of your own language through advanced grammar and communication.

Whether your goal is further study, an international career, or simply the ability to connect with new people and cultures, A Level German will give you the tools to get there.



Assessment

You will sit three examinations at the end of Year 13:

- Paper 1: 2 hour 30 minute written examination (Reading, Listening, Writing) 50% of A Level
- Paper 2: 2 hour written examination (literary text and film) 20% of A Level
- Paper 3: 25-30 minute spoken examination 30% of A Level.

Career Opportunities

German is recognised by universities as a highly respected facilitating subject, making it a valuable addition to any UCAS application. But its benefits go far beyond university – learning German opens doors to an exciting variety of careers and life experiences.

With strong language skills, you could work internationally in fields such as translation and interpreting, journalism, law, international business, or the Civil Service. German also provides a competitive edge in marketing, sales, travel and tourism, education (including TEFL), and international charity or volunteering work.

Employers value the problem-solving, communication, and cultural awareness that linguists bring – skills that are in high demand in our increasingly global world. Whether you dream of working abroad, standing out in the graduate job market, or simply keeping more options open for the future, A Level German gives you a powerful head start.

Further Information:

See Mr Bailey-Rigby or Mr Schauer

A-LEVEL HISTORY

Course Summary

Students studying A Level History in Year 12 have the opportunity to investigate two different historical periods:

- Component 1: Breadth Study: 1D Stuart Britain and the Crisis of Monarchy 1603–1649. This option allows students to study in breadth issues of change, continuity, cause and consequence in this period through the following key questions: How far did the monarchy change under the Stuart kings? Why and with what results were there disputes over religion? How effective was the opposition to the policies of the monarch? How important was the role of key individuals and groups and how were they affected by developments?
- Component 2: Depth Study: 2K International Relations and Global Conflict 1890–1917. This option provides for the study in depth of a period in which political ambitions and rivalries between nations plunged the world into major wars. It develops concepts such as nationalism, militarism and the balance of power and encourages students to reflect on the causes of war and what makes international diplomacy succeed or fail.

In Year 13 students will consolidate their knowledge of the two selected units and will extend the period of study for each component.

- Component 1: Breadth Study: 1D Stuart Britain and the Crisis of Monarchy 1649–1703.
- Component 2: Depth Study: 2K: International Relations and Global Conflict 1917–1941.
- Historical Investigation

During Year 13 students will also complete an investigation, this is a non-examined assessment; this is a free choice of question from a specified period of study.

Assessment

- Component 1: Breadth Study - Written Paper. 2 hours and 30 minutes written examination, there are 3 questions on the paper (1 of which is compulsory). 80 marks available and is worth 40% of the A Level.
- Component 2: Depth Study - Written paper. 2 hours and 30 minutes written examination, there are 3 questions on the paper (1 of which is compulsory). 80 marks available and is worth 40% of the A Level.
- Component 3: Historical Investigation - Coursework Unit. Assessed essay 3,500–4,000-word essay (written in own time). 40 marks.

Career Opportunities

History is considered as a facilitating A Level and is recognised as such on any university application. A Level History students can continue onto university into degree courses related to education including History, Law, Politics, Journalism and Primary Education.

Further Information:

See Mrs Biddle or Mrs Ireland





A-LEVEL LAW

Course Summary

What is Law A Level about?

Law is the study of how rules are made, applied and interpreted in society. You'll explore the English legal system, criminal and civil law, and key debates about justice, morality and human rights. The course develops analytical thinking, problem-solving and evaluation skills, preparing you for higher education and a wide range of careers.

What will I study?

The course is divided into three components:

- The Legal System and Criminal Law
- How laws are made and enforced
- Roles of judges, magistrates, juries and lawyers
- Criminal liability, non-fatal and fatal offences, property offences and defences
- Law Making and the Law of Tort
- Parliamentary law making, delegated legislation, precedent and statutory interpretation
- Civil liability: negligence, occupiers' liability, nuisance, vicarious liability and remedies
- The Nature of Law and an Optional Area
- Law in context: links with morality, justice and society
- Plus either:
 - Contract Law (formation, terms, remedies, consumer protection)
 - Human Rights Law (European Convention rights, Human Rights Act, enforcement in UK)

Assessment

- 3 exams at the end of Year 13 (no coursework):
- Paper 1: The Legal System and Criminal Law (2 hours)
- Paper 2: Law Making and Tort (2 hours)
- Paper 3 or 4: Nature of Law + Human Rights or Contract Law (2 hours)
- All exams involve problem-solving scenario questions and essays.

Career Opportunities

- Law degrees and careers in the legal profession (solicitor, barrister, legal executive)
- Criminology, politics, sociology, business or history courses
- Careers in government, police, journalism, finance, HR, or any field that values reasoning and problem-solving.

For More Information

Further Information:

See Mr Scarratt





A-LEVEL MATHEMATICS

Course Summary

Throughout the A Level course students will cover topics such as: Algebra; Coordinate Geometry; Sequences and Series; Trigonometry; Exponentials and Logarithms; Differentiation; Integration; Vectors; Numerical Methods; Proof; Data presentation and interpretation; Probability; Statistical Distributions; Statistical Hypothesis Testing; Quantities and units in Mechanics; Kinematics; Forces and Newton's Laws & Moments.

GCSE prior knowledge is assumed and will be tested throughout. Any of the content examined on Paper one will be assumed for Papers two and three and could therefore be examined.

Assessment

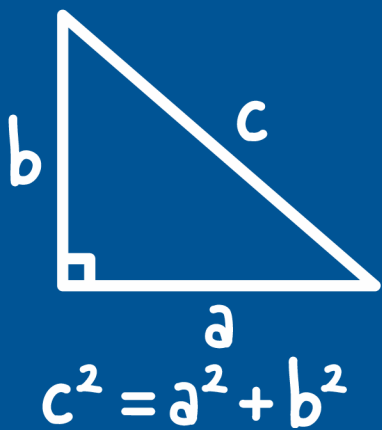
There are three externally marked examinations for the A Level course. Each paper is 2 hours long and contributes a third to the overall A Level. Students will sit two Pure Mathematics papers and one applied paper, which consists of both Statistics and Mechanics. All papers will be sat at the end of the 2-year course

Career Opportunities

Mathematics is considered as a facilitating A Level and is recognised as such on any university application. A Level Maths students can continue onto university and read degree courses such as Accountancy; Aeronautical Engineering; Biochemistry; Chemical Engineering; Electrical/Electronic Engineering; Geology; Maths; Medicine; Optometry; Pharmacy; Physics; Psychology and Veterinary Science.

Further Information:

See Miss Hughes or Mr Picken





A-LEVEL MUSIC

Course Summary

The WJEC Eduqas specification is designed to allow learners to pursue their own musical interests. Learners develop skills in the three distinct but related disciplines of performing, composing and appraising, whilst having flexibility to specialise in either performing or composing. Learners may choose to apportion 10% of their assessment to either performing or composing as an in-depth study.

The WJEC Eduqas specification is designed to offer contrast and breadth as well as depth of study. Learners will engage with both classical and popular music. All learners will study the development of the symphony, engaging with landmark orchestral repertoire, which is important in developing knowledge and understanding of musical elements and language in context. Learners will use the musical language of this period to compose one piece of music to a brief.

Learners will also choose one area of study from Pop and Rock, Musical Theatre and Jazz and one further area of study exploring the musical language and styles from either the early twentieth century or the late twentieth and early twenty-first centuries.

Assessment

- Component 1: Performing (30%) – Solo and/or ensemble recital, 10–12 minutes.
- Component 2: Composing (30%) – Two compositions (one to a set brief, one free), total 4–6 minutes.
- Component 3: Appraising (40%) – 2 hour 15 min written exam, covering listening, analysis, and essay questions on set works and musical contexts.

Career Opportunities

Studying Eduqas A-Level Music can open up a wide range of career opportunities, both directly in music and in broader creative or analytical fields. Directly related paths include performing, composing, teaching, conducting, music therapy, sound engineering, and arts administration. It also provides a strong foundation for higher education in music (e.g. university or conservatoire). Beyond music-specific roles, the course develops transferable skills—such as creativity, communication, analysis, and teamwork—that are valued in careers like media, marketing, event management, publishing, and education.

Further Information:

See Dr Shuff





A-LEVEL PHOTOGRAPHY

Course Summary

Capture the world through your lens. A Level Photography invites you to explore how images can tell stories, challenge perceptions, and inspire change. This is a creative and dynamic course where you'll develop both technical expertise and a personal artistic voice.

You'll learn to use a wide range of equipment and techniques – from digital cameras and editing software to mixed media manipulation. Alongside practical skills, you'll investigate the work of professional photographers and artists, drawing inspiration to inform and shape your own ideas.

The course encourages experimentation and independent thinking. You'll explore themes that matter to you, creating powerful visual projects that showcase your individuality. Whether you're documenting real-life events, constructing imaginative scenes, or exploring abstract concepts, your portfolio will reflect your unique perspective

Why choose A Level Photography?

- Express yourself creatively and develop a unique visual style.
- Gain practical skills with professional-standard equipment and software.
- Build a personal portfolio to support applications to art colleges and universities.
- Learn to critically analyse imagery and understand the power of visual communication.

Turn your curiosity into creativity and your vision into images that speak louder than words.

During the first year of study, students will be introduced to a variety of experiences that explore a range of photographic media, techniques and processes using both traditional and new technologies.

Assessment

- The A Level course is split into two components:
- Component 1 (60% of A Level) is a personal investigation based on a topic chosen by the student. This is a practical investigation supported by written material. The investigation should be a coherent, in- depth study that demonstrates the student's ability to construct and develop a sustained project, from a starting point to a final outcome.
- Component 2 (40% of A Level) is an externally set assignment where students choose from topics set by the examination board. Students will have a choice of starting points set by the examination board and a preparatory period, starting February 1st in Year 2, resulting in fifteen hours of supervised and examined time.
- All components are internally marked and externally moderated. The work is externally moderated by the AQA board .

Career Opportunities

Photography A Level can lead to a range of Art, Photography, Design and Digital Media courses at Higher Education institutions such as Photojournalism, Fine Art and Film Production. The process of investigation and research is used in all Design, Arts and Media courses.

Further Information:

See Mrs Hall or Miss West





A-LEVEL PHYSICAL EDUCATION

Course Summary

The course covers a range of different topics across the two years, these include:

- Applied Anatomy and Physiology develops knowledge and understanding of the changes within the body during sport.
- Skill Acquisition focuses on how skill is acquired and the impact of psychological factors on performance.
- Sport and Society (1) develops knowledge and understanding of sport and society focusing on emergence of globalisation of sport in the 21st century.
- Exercise Physiology develops understanding of the adaptations to the body systems through training or lifestyle, and how these changes affect the efficiency of those systems.
- Biomechanical Movement develops knowledge and understanding of motion and forces, and their relevance to performance in physical activity and sport.
- Sport Psychology develops knowledge and understanding of the role of sport psychology in optimising performance in physical activity and sport.
- Sport and Society (2) develop knowledge and understanding of sport and society considering the concepts of physical activity and sport, development of elite performers, ethics, violence, drugs, sport and the law and the impact of commercialisation.
- The Role of Technology in Sport develops understanding of the types and use of data analysis to optimise performance.



Assessment

Paper 1: Written examination consisting of multiple choice, short answers and extended writing, 2 hours, 105 marks, 35% of A Level.

Section A: Applied anatomy and physiology

Section B: Skill acquisition

Section C: Sport and society.

Paper 2: Written examination consisting of multiple choice, short answers and extended writing, 2 hours, 105 marks, 35% of A Level.

Section A: Exercise physiology and biomechanics,

Section B: Sport psychology

Section C: Sport and society and technology in sport.

Practical Performance: Internal assessment throughout the two years with external moderation. 90 marks, 30% of A Level. Students are assessed as a performer or coach in a full sided version of one activity, plus, written and verbal analysis.

Career Opportunities

A Level PE Students can continue onto university into degree courses related to education, sports science, health professions, physiotherapy, dietician and sports development. PE is often accepted as a 'science' for nursing.

Further Information:

See Mr Swift, Miss Bradley or Mrs Taylor



A-LEVEL PHYSICS

Course Summary

Year 12: Building the foundations

Forces and Motion – Learn how to predict the movement of cars, athletes, rollercoasters, and even planets. This is classical mechanics: the “language” engineers, astronauts, and physicists use every day.

Work and Energy – Where does energy come from? Where does it go? Explore ideas that explain everything from how machines run to why a bungee jumper slows down safely before hitting the ground.

Electric Current – Unlock the physics of electricity: how circuits power your phone, your laptop, and the entire National Grid.

Waves – Understand sound, light, and water waves, plus how they interfere and combine. These ideas explain how musical instruments work, why rainbows appear, and even how noise-cancelling headphones block sound.

Quantum Mechanics – Step into the strange, microscopic world where particles behave like waves, energy comes in “packets,” and electrons can be in two states at once.

By the end of Year 12, you’ll see the world with new eyes – understanding both everyday situations and the hidden rules of the universe.

Year 13: Expanding your horizons

In the second year, you’ll take those foundations and push further, applying them to cutting-edge science and real-world challenges.

Nuclear and Particle Physics – Discover what holds atomic nuclei together, how nuclear power stations generate energy, and what particle accelerators (like CERN’s Large Hadron Collider) reveal about the building blocks of matter.

Cosmology – Travel back to the beginning of the universe: the Big Bang, the mysterious nature of dark matter and dark energy, and the ultimate fate of everything. This is physics on a cosmic scale.

Medical Imaging – Physics literally saves lives. Learn how X-rays, ultrasound, CT scans, and MRI machines use waves and fields to “see inside” the human body.

Fields – Gravitational, electric, and magnetic fields explain how forces act at a distance. These concepts help us understand orbiting satellites, electric motors, and even wireless charging.

By the end of Year 13, you won’t just know about physics – you’ll be thinking like a physicist, making connections between abstract theory and real-world applications

Assessment

The A Level year has three theory exams:

1. Modelling Physics, worth 37%;
2. Exploring Physics, worth 37%;
3. Unified Physics, worth 26%.

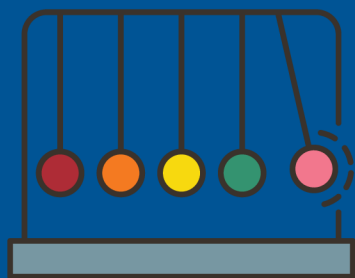
The ‘Practical Endorsement’ is separate and is assessed as either Pass or Fail.

Career Opportunities

A Level Art & Textiles students can continue onto university to complete a degree or a foundation degree. This will lead onto specific areas of specialism depending on the course selection, i.e. designer, crafts person, photographer, sculptor, illustrator, graphic designer, surface pattern, product design, fashion design.

Further Information:

See Mr Williams, Mr Edwards or Mr Woolhouse





A-LEVEL PSYCHOLOGY

Course Summary

Year 1 of this course allows students to begin to develop an understanding of the different topic areas within Psychology. They will examine issues surrounding the functioning of the memory, the formation of attachments, the impact of social influence and also the diagnosis of some mental illnesses. This course also develops students' understanding of the processes involved in research and analysis; particularly developing skills of scientific enquiry.

Year 2 of the course develops students' knowledge of Psychology, building on what they have previously learnt. Students will study Social Psychology, Examining Adult Relationships and Biological Psychology (which examines the processes involved in biological rhythms and sleep) and Individual Differences (which focuses on the classification and treatment of a chosen mental disorder). Students are also expected to study Applied Psychology and study issues relating to Forensic Psychology. Throughout the course they will develop their ability to conduct research with a focus on analysis.

Assessment

Three A Level examinations take place at the end of the second year of study. Each examination lasts for 2 hours and each paper is worth 96 marks which equates to 33.3% of the total A Level course:

Paper 1: Introductory topics in Psychology.

Paper 2: Psychology in context.

Paper 3: Issues and options in Psychology.

Career Opportunities

A Level Psychology student can continue to study Psychology at university to degree level. Degree courses related to Psychology include for example: Sociology, Criminology, English, Teaching and Social Work. In addition, students can choose to move straight into employment in careers within the Health Service, Social Work, Care in the Community, Nurseries, Human Resources, Advertising, Policing, Marketing and Journalism.

Further Information:

See Ms Bowden or Mrs Acton





A-LEVEL SOCIOLOGY

Course Summary

Year 1 of this course allows students to begin to develop an understanding of the different topic areas within Sociology. Students will begin to understand the major perspectives in Sociology where they will apply this knowledge to aspects identified in the specification, focusing on the family and education. Students will also begin to understand the scientific element of Sociology by learning about the methods of investigation and analysis within the research methods section of the course.

Year 2 of this course develops students' knowledge of the sociological perspectives by study units such as Beliefs in Society and Crime and Deviance. Throughout the course they will develop their ability to conduct research, building on their previous knowledge of the research methods. In addition, they will conduct a more comprehensive study of all the perspectives within Sociology.

Assessment

Three examinations will be completed at the end of the 2-year course. Each paper will take 2 hours, is worth 80 marks and equates to 33.3% of the total A Level:

- Paper 1: Education with Methods in Context.
- Paper 2: Topics in Sociology.
- Paper 3: Crime and Deviance with Theory and Methods.

Career Opportunities

A Level Sociology students can continue with Sociology at university to degree level. Degree courses related to Sociology include Psychology, English, Social Work and many more. In addition, students working towards a career within the Health Service or Police Force would also benefit from a qualification in Sociology. Other related careers are Nursing, Health Care workers, Teaching, working with children and many more.

Further Information:

See Ms Bowden or Mrs Biddle





AAQ BTEC HUMAN BIOLOGY

Course Summary

Mandatory Units (both Certificate & Extended)

- F170: Fundamentals of human biology (external exam) – core biology topics: human cells & tissues; organ systems & physiology; endocrinology, neurobiology & reproduction; basics of microbiology.
- F171: Health and disease (external exam) – causes, prevention, and treatment of human diseases; interactions between healthy and diseased systems.
- F172: Genetics – DNA, inheritance, genetic engineering & testing etc.
- F173: Biomedical techniques – experimental / lab skills; diagnostics; microscopy; molecular biology methods etc.
- Optional Units (for Extended Certificate)
- F174: Nutrition and metabolism
- F175: Human reproduction
- F176: The brain
- F177: Drug development

Assessment

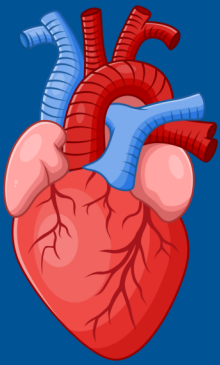
Two one hour and fifteen minute written examinations. Two mandatory OCR set assignments and two optional OCR set assignments.

Career Opportunities

The qualification carries UCAS points and is recognised by higher education providers as contributing to admission requirements of many relevant human biology/health science courses such as Nursing, Midwifery, Occupational Health or Sports Science.

Further Information:

See Mr Leech or Mr Williams





AAQ BTEC NATIONAL IN INFORMATION TECHNOLOGY

Course Summary

This qualification has been designed in partnership with higher education experts and industry leaders to give you the knowledge, skills, and confidence to succeed in university and beyond. You'll explore the world of computing through four exciting, hands-on units:

- Information Technology Systems – Discover how software and hardware work together, and explore real-world issues in IT systems.
- Cyber Security and Incident Management – Learn how to protect networks, understand different types of cyber attacks, and develop strategies to respond effectively.
- Website Development – Build your own websites using industry-standard tools, and test them for usability, functionality, and impact.
- Relational Database Development – Dive into the structure of data, design your own databases, and manage them using powerful DBMS tools.

This course equips you with practical skills, problem-solving abilities, and technical knowledge that are highly valued in higher education and future careers. Whether you dream of creating innovative apps, safeguarding systems, designing websites, or managing complex data, this qualification gives you the foundation to make it happen.

This qualification is equivalent to 1 A Level

Assessment

The AAQ BTEC Level 3 National Extended Certificate in IT consists of 4 units: Information Technology Systems, Cyber Security and Incident Management, Website Development and Relational Database Development. All are mandatory. Two are externally examined. Two are internally assessed.

Career Opportunities

The BTEC Level 3 Extended Certificate in IT opens doors to a wide range of exciting career and higher education opportunities. The skills you gain—practical IT expertise, problem-solving, project management, and digital creativity—are in high demand across almost every industry.

Potential career paths include:

- Cybersecurity Specialist – Protect networks and systems from digital threats.
- Software or App Developer – Build the applications that power the modern world.
- Web Designer / Developer – Create interactive, user-friendly websites.
- Data Analyst / Database Manager – Organise, analyse, and make sense of data for businesses.
- IT Support / Systems Administrator – Keep businesses running smoothly by managing IT infrastructure.
- Network Engineer – Design and maintain robust, secure networks.
- Digital Project Manager – Lead technology projects from concept to completion.

Further Information:

See Miss Deavall, Miss Clee or Mr Moody





AAQ HEALTH AND SOCIAL CARE

Course Summary

The AAQ (Applied Award Qualification) in Health and Social Care provides students with an excellent foundation in understanding the health and social care sector. This course is designed for learners who are interested in pursuing careers in healthcare, early years education, social work, or support services.

This qualification combines academic study with real-world understanding, developing both subject knowledge and the skills necessary for further study or employment.

Students will explore the key themes of care and support, including health, wellbeing, equality, and communication. The course provides a practical and theoretical insight into what it means to work in health and social care settings.

◆ Key Topics Studied:

Unit 1: Introduction to Health and Social Care

Unit 2: Effective Communication

Unit 3: Health and Wellbeing

Unit 4: Health Promotion and Services

Assessment

60% Coursework (Internally Assessed)

Portfolio of evidence built throughout the course

Includes written assignments, presentations, case studies, and practical work

40% External Assessment

Exam or controlled assessment set by the exam board

Focuses on applying knowledge to real-life scenarios

Career Opportunities

Studying Health and Social Care can lead to further education and careers in: Nursing, Midwifery, Social Work, Early Years Education, Occupational Therapy, Mental Health Support, Youth Work.

Further Information:

See Ms Bowden, Mrs Heath, Mrs Lakatos or Mrs Acton





BTEC BUSINESS

Course Summary

The Pearson BTEC Level 3 National Diploma in Business is the ideal course for learners aged 16–19 who want a strong foundation in business. Whether you're aiming for university, a Higher Apprenticeship, or a career in business, this qualification sets you up for success.

The course includes 6 mandatory units, such as Exploring Business, Marketing Campaigns, Personal and Business Finance, and International Business, with 3 units externally assessed. Plus, you can choose 2 optional units like Customer Service or Recruitment and Selection to tailor your learning.

This programme gives you the skills and knowledge to excel in the business world, opening doors to higher education and career opportunities.

Assessment

The BTEC Level 3 National Diploma in Business consists of six mandatory units plus two optional units. Developing a Marketing Campaign is a task set and marked by Pearson and is completed under supervised conditions. Personal and Business Finance is a written examination set and marked by Pearson. Principles of Management is a task set and marked by Pearson and is also completed under supervised conditions. 45% of the course is externally assessed. The remaining units are internally assessed.

Career Opportunities

Upon completing the course, learners have a range of exciting options to explore. You can progress to university, enrolling in degree programmes related to Business, Marketing, Finance, Law, Human Resources, Accounting, Events Management, or even Leisure and Tourism Studies—fields that are crucial to today's dynamic business environment.

Alternatively, if you prefer to dive straight into the professional world, you can seek employment in areas like sales, marketing, finance, or management, where you'll apply the practical skills learned throughout the course. Business-focused apprenticeships offer another great option, providing hands-on experience while working towards industry-recognized qualifications.

If entrepreneurship sparks your interest, the course also provides a strong foundation for starting your own business, giving you the confidence and know-how to bring your ideas to life.

Further Information:

See Mrs St. Clair, Mr Scarratt or Mrs Jones



Course Summary

The Pearson BTEC Level 3 National Diploma in Sport is equivalent in size to 2 A Levels. This qualification is particularly appropriate for learners who are interested in progressing to a career in sport and physical activity development either directly, or through higher education. Students who take this course need to have a passion for sport and a willingness to develop new skills associated with sports performance, coaching, fitness and psychological factors.

Assessment

Learners will study 9 units which will have a mixture of internal and external assessment. Students are graded at Pass, Merit or Distinction and as this is a Diploma they will receive double awards.

- Unit 1: Anatomy and Physiology (External Assessment - Written Test).
- Unit 2: Fitness Training and Programming for Health, Sport and Well-being (External Task set and marked by Edexcel).
- Unit 3: Professional Development in the Sports Industry (Internal Coursework Assessment).
- Unit 4: Sports Leadership (Internal Coursework Assessment).
- Unit 5: Application of Fitness Testing (Internal Coursework Assessment).
- Unit 6: Sport Psychology (Internal Coursework Assessment).
- Unit 7: Practical Sports Performance (Internal Coursework Assessment).
- Unit 22: Investigating Business in Sport and the Active Leisure Industry (External Task set and marked by Edexcel).
- Unit 23: Skill Acquisition in Sport (Internal Coursework Assessment)

Career Opportunities

BTEC Sport Students can continue onto University into degree courses related to Education and Sports, Health Professions, Physiotherapy, Dietician and Sports Development. The qualification also prepares learners for broader roles in sport such as:

- Elite sports performer (in chosen sport).
- Assistant performance analyst.
- Technical scout.
- Physical Education Teacher.
- Community coaching roles.
- Coaching roles in specific sports.
- Development coordinator.

Further Information:

See Mr Swift





T-LEVEL IN EARLY EDUCATION & EARLY YEARS (EARLY YEARS EDUCATOR)

Course Summary

The T Level in Education and Early Years is a two-year course designed for students who want to work with children from birth to 7 years. It combines classroom learning with real industry experience through a substantial work placement (around 750 hours).

Students will learn:

- Child development – from birth to 7 years.
- Safeguarding, health & wellbeing – keeping children safe and supporting their needs.
- Education & curriculum – how children learn and how to support their development.
- Working with families & professionals – communicating effectively and supporting children's wider needs.
- Special educational needs (SEND) – understanding and supporting children with additional needs.

Assessment

Assessment is a mix of:

- **Exams** – testing knowledge of core content.
- **Employer-set project** – a practical task designed with employers to show applied skills.
- **Occupational specialism** – practical skills assessed in the workplace and through assignments.
- **Industry placement** – hands-on experience in an early years setting.

Career Opportunities

After completing the T Level, students are qualified to work or follow a career path into the following areas:

- Employment in early years roles, such as:
 - Nursery worker
 - Early years educator
 - Teaching assistant
 - Childminder
- Higher education: progress to a foundation degree or full degree in:
 - Early Childhood Studies
 - Primary Education
 - Childhood and Youth Studies
- Apprenticeships: advanced apprenticeships in education, health, or social care.

Further Information:

See Ms Bowden, Mrs Heath or Mrs Acton



ENRICHMENT OPTION: EPQ

Course Summary

Extended Project Qualification (EPQ) allows each student to embark on a largely self-directed and self-motivated project. Students must choose a topic, plan, research and develop their idea and decide on their finished product. A project topic may be directly related to a student's main study programme, but should look beyond the specification. A finished product may take the form of a:

- Research based written report.
- Production (e.g. charity event, fashion show or sports event etc. A written report must accompany this option).
- An artefact (e.g. piece of art, a computer game or realised design. A written report must accompany this option).

Students must also record their project process in their Production Log. The process of recording and completing a project is as important as the finished product. Both the Production Log and Product will be assessed.

Assessment

- Choose an area of interest and draft their project title and aims.
- Plan, research and carry out their project.
- Keep a production log of all stages of the project production, reviewing and evaluating their progress.
- Complete the project product.
- Prepare and deliver a presentation.
- Review the outcome of their project and presentation.

Career Opportunities

The EPQ project teaches transferable skills in preparation for university. It helps students to develop skills such as planning, research, analysis and evaluation beyond those taught within their chosen subjects.

Further Information:

See Mrs Davies



ENRICHMENT OPTION: FURTHER MATHS

Course Summary

The Advanced Subsidiary GCE in Further Maths builds on the skills, knowledge and understanding set out in GCSE Mathematics and in Advanced Subsidiary Mathematics qualifications. Assessments will be designed to reward students for demonstrating the ability to provide responses that draw together different areas of their knowledge, skills and understanding from across the full course of study for the A Level Further Maths qualification. Problem solving, proof and mathematical modelling will be assessed in further Mathematics in the context of the wider knowledge which students taking AS Further Maths will have studied.

Units of Study:

Core Pure Mathematics

- Proof, Complex Numbers, Matrices, Further Algebra and functions, Further calculus, Further vectors.

Decision Mathematics 1 and Further Pure Mathematics 1

- Algorithms, Linear Programming, Gantt Charts, Eulerian Graphs, Vector cross product, Conic sections, t - formulae and trigonometric identities and Numerical methods.

Assessment

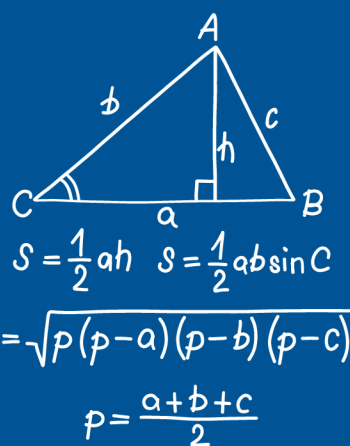
The Advanced Subsidiary GCE in Further Maths consists of two externally-examined papers. Both papers will be sat at the end of the AS Level. Both papers are 1 hour and 40 minutes in length and contribute 50% each to the overall qualification. The first paper will examine Core Pure and the second paper will examine Decision Mathematics 1 and Further Pure 1.

Career Opportunities

Further Maths is considered as a facilitating course and is recognised as such on any university application. If you plan to apply for any degree that has a high mathematical content (any Engineering, Science or Maths degree), then a qualification in Further Maths will give your application an edge. You will study more Maths that is relevant to your degree course. Some prestigious university degree courses require Further Maths qualification to AS Level.

Further Information:

See Mrs Hughes or Mr Thomson





ENTRY REQUIREMENTS

A Level Courses

Art and Textiles	You must have obtained a grade 4 in GCSE English Language or English Literature, plus four further higher grade passes (this includes grade 4 or above in GCSE subjects or Level 2 Pass or above in BTEC subjects) including grade 4 in GCSE Art or GCSE Graphics or GCSE Product Design or GCSE Textiles.
Biology	A minimum of three grade 6s and five grade 5s at GCSE including a grade 6 in Maths GCSE and grade 7 Biology GCSE or Combined Science.
Business Studies	A minimum of three grade 6s and five grade 5s at GCSE including a grade 5 in GCSE English Language and Maths (you do not need to have studied GCSE Business).
Chemistry	A minimum of three grade 6s and five grade 5s at GCSE including a grade 6 in Maths GCSE and grade 7 in Chemistry GCSE or Combined Science.
Computer Science	A minimum of three grade 6s and five grade 5s at GCSE including a grade 5 in GCSE English Language and grade 6 in GCSE Maths.
English Language	A minimum of three grade 6s and five grade 5s at GCSE including a grade 6 in GCSE English Language and English Literature.
English Literature	A minimum of three grade 6s and five grade 5s at GCSE including a grade 6 in GCSE English Language and English Literature.
Geography	A minimum of three grade 6s and five grade 5s at GCSE including a grade 6 in GCSE English Language or English Literature. If GCSE Geography was studied, you must have achieved at least a grade 6.
German	A minimum of three grade 6s and five grade 5s at GCSE including a grade 6 in GCSE German.
Graphics	You must have obtained a grade 4 in GCSE English Language or English Literature, plus four further higher grade passes (this includes grade 4 or above in GCSE subjects or Level 2 Pass or above in BTEC subjects) including grade 4 in GCSE Graphics or GCSE Art or GCSE Product Design or GCSE Textiles.



ENTRY REQUIREMENTS

A Level Courses

History	A minimum of three grade 6s and five grade 5s at GCSE including a grade 6 in GCSE English Language or English Literature. If GCSE History was studied, you must have achieved at least a grade 6.
Law	A minimum of three grade 6s and five grade 5s at GCSE including a grade 6 in GCSE English Language and Maths
Mathematics	A minimum of three grade 6s and five grade 5s at GCSE including a grade 6 in GCSE Maths.
Music	A minimum of five grade 5s at GCSE including a grade 5 in GCSE English Language/Literature and Maths, and the ability to play a musical instrument.
Photography	A minimum of five grade 5s at GCSE including a grade 5 in GCSE Art or GCSE Graphics or GCSE Product Design and preferably including a grade 4 in GCSE English Language and GCSE Maths. However, students with a genuine interest in photography will be considered for the course.
PE	A minimum of five grade 5s at GCSE including a grade 5 in GCSE English Language/Literature and GCSE Maths. (You do not need to have studied GCSE PE, however, good practical sports performance (including regular participation in a club / competition) is essential).
Physics	A minimum of three grade 6s and five grade 5s at GCSE including a grade 6 in Maths GCSE and grade 7 Physics GCSE or Combined Science.
Psychology	A minimum of three grade 6s and five grade 5s at GCSE including a grade 6 in GCSE English Language or English Literature, a grade 5 in GCSE Biology or Chemistry and a grade 5 in GCSE Maths.
Sociology	A minimum of three grade 6s and five grade 5s at GCSE including a grade 6 in GCSE English Language or English Literature.



ENTRY REQUIREMENTS

BTEC/AAQ Level 3 Courses

National Extended Certificate Applied Human Biology	You must have achieved GCSE grade 4 in GCSE English Language OR English Literature, Maths and either Biology or Combined Science, plus 1 further higher grade pass (this includes grade 4 or above in GCSE subjects or Level 2 Pass or above in BTEC subjects).
National Diploma Business Studies	You must have obtained a grade 4 in GCSE English Language or English Literature and Maths, plus three further higher grade passes (this includes grade 4 or above in GCSE subjects or Level 2 Pass or above in BTEC subjects).
National Diploma IT	You must have obtained a grade 4 in GCSE English Language or English Literature and Maths, plus three further higher grade passes (this includes grade 4 or above in GCSE subjects or Level 2 Pass or above in BTEC subjects).
National Diploma Sport	You must have obtained a grade 4 in GCSE English Language or English Literature, plus four further higher grade passes (this includes grade 4 or above in GCSE subjects or Level 2 Pass or above in BTEC subjects).
National Diploma Health & Social Care	You must have obtained a grade 4 in GCSE English Language or English Literature, plus four further higher grade passes (this includes grade 4 or above in GCSE subjects or Level 2 Pass or above in BTEC subjects).
National Extended Certificate Applied Psychology	You must have obtained a grade 4 in GCSE English Language or English Literature, plus four further higher grade passes (this includes grade 4 or above in GCSE subjects or Level 2 Pass or above in BTEC subjects).

Other Courses

Extended Project Qualification (EPQ)	Predominately grade 5s at GCSE including a grade 5 in English Language or Literature along with a keen interest in a particular subject area.
AS Further Maths	A minimum of five grade 6s and three grade 5s at GCSE including a grade 8 in GCSE Maths.



NEED EVEN MORE REASONS TO APPLY?

At Biddulph Sixth Form, we believe your education should be the launchpad for your future. This is your chance to build the knowledge, skills, and confidence you'll need to take the next step towards your ambitions — whether that's university, an apprenticeship, or straight into your career. Our aim is simple: to inspire you, challenge you, and support you so you can achieve your goals and dreams.

We're proud of our strong track record of success. Students from Biddulph have gone on to study at world-leading universities — including Oxford, Cambridge, Durham, Manchester, Leeds and Sheffield — as well as local favourites like Staffordshire, Manchester Metropolitan, Derby, and Keele. Many of our students have secured places on competitive courses such as Medicine and Veterinary Science.

But university isn't the only pathway. We also prepare you for high-quality apprenticeships and employment opportunities with top organisations, from the NHS and AstraZeneca to local government and leading national companies.

Wherever you want to go, Biddulph Sixth Form will give you the foundation — and the confidence — to get there.





HOW TO APPLY

Current Biddulph High School Students:

You will be invited to complete an application form of initial interest followed by an individual meeting to discuss course choices and next steps.

Following completion of the individual meetings, all applications will be considered and offers made during the Spring term. Successful applicants will be invited to a 'Sixth Form Induction Week' in June. Enrolment begins on GCSE results day.

External Applicants:

Each year we have a number of students who join us from schools within the local area. If you wish to be considered for a place within Biddulph Sixth Form, please visit our website for an application form or contact us for an informal discussion.

All documents are available on the Biddulph High School website www.biddulphhigh.co.uk/6th-form

All applications and enquiries to: cswift@bhs.potteries.ac.uk

OUR STUDENTS SAY...



"I love the freedom BH6 offers whilst still keeping a structure in place. The teachers allow you more control but are always there to help you."

"BH6 has a very supportive community, not only the staff but also your fellow students, which makes it a friendly and positive place to learn."



"The best thing about BH6 is the support from staff. No matter what the problem, whether it's personal or school, you are always supported if you need to be."